



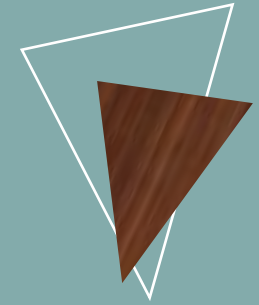
DEL LAMINATES

+91-9910017249, +91-9457515151 📞
director@delasisindustries.com ✉️
www.dellaminates.com 🌐
Delasis Industries Pvt. Ltd. 8/29, Chiranjeev Vihar, 📍
Ghaziabad UP - 201002 INDIA

DESIGN COLLECTION 2020 - 2022



DEL LAMINATES
Bring Home Your imaginations



Del Laminates comes with a State-of-the-art manufacturing facility based at Ghaziabad near New Delhi India with Global & Domestic Presence with a Highly Professional staff of more than 500+ individuals. It has grown to be among Top 10 Exporters of Decorative Laminates brands in the Global Market & with in country. Del Laminates was incorporated as a company more than 25 years ago, it has grown its strength with innovation, superior quality and Professional approach. The company has conquered the technological knowledge and expertise through its advanced manufacturing plants. We present a collection with unique elements including the numerous categories of High-Pressure Decorative laminates, Decorative veneers, flush doors, door Skins & Natural Veneer Laminates etc. the diversified bouquet of products have enabled a sustainable place for the company in a extremely competitive Global market

Our Vision

We, at Del Laminates, endeavor to become the largest and most preferred interior decorative e company delivering enhanced value to our valuable customers with our strict quality control, continues R&D on new products along with admirable service beliefs like manufacturing optimum quality products, being approachable to customers' needs and offering unrestricted services to our clientele.



European
Standard
EN 438





Compact Laminate



Specification

SL. NO.	PROPERTIES	TEST METHOD	MERITS OF PERFORMANCE	UNIT OF MEASUREMENT	RESULTS (EN 438-2 & 3)
			EN-438-2 & 3: Laminate Classifications		HGS / VGS
1	SURFACE QUALITY				
1.1	Surface quality	EN 438-2:2016 (Clause-4 & 5)	Spots, dirt and similar surface defects	mm ² /m ²	≤ 1
			Fibres, hairs and scratches	mm/m ²	≤ 10
2	DIMENSIONAL PROPERTIES				
2.1	Thickness	EN 438-2:2016 (Clause-5)	Thickness tolerance	mm	0.5≤T<1 : ±0,1
				mm	1≤T<2 : ±1,5
2.2	Size	EN 438-2:2016 (Clause-6)	Length and width	mm	+ 10 / - 0
2.3	Straightness of edges	EN 438-2:2016 (Clause-7)	Straightness of edges	mm/m	≤ 1,5
2.4	Squareness	EN 438-2:2016 (Clause-8)	Squareness	mm/m	≤ 1,5
2.5	Flatness	EN 438-2:2016 (Clause-9)	Flatness (measured on full-size sheet)	mm/m	60
3	PHYSICAL PROPERTIES				
3.1	Resistance to surface wear	EN 438-2:2016 (Clause-10)	Wear Resistance - Initial Point	Revolutions	≥ 150(HGS) / ≥ 50(VGS)
3.2	Resistance to immersion in boiling water	EN 438-2:2016 (Clause-12)	Appearance - Gloss Finish	Rating	≥ 3
			Appearance - Other Finishes	Rating	≥ 4
3.3	Resistance to water vapour	EN 438-2:2016 (Clause-14)	Appearance - Gloss Finish	Rating	≥ 3
			Appearance - Other Finishes	Rating	≥ 4
3.4	Resistance to dry heat (180°C)	EN 438-2:2016 (Clause-16)	Appearance - Gloss Finish	Rating	≥ 3
			Appearance - Other Finishes	Rating	≥ 4
3.5	Dimensional stability at elevated temperatures	EN 438-2:2016 (Clause-17)	Cumulative dimensional change	Longitudinal %	≤ 0,55(HGS) / ≥ 0,75(VGS)
				Transversal %	≤ 1,05(HGS) / ≥ 1,25(VGS)
3.6	Resistance to Wet Heat	EN 438-2:2016 (Clause-18)	Appearance - Gloss Finish	Rating	≥ 3
			Appearance - Other Finishes	Rating	≥ 4
3.7	Resistance to impact with Small diameter ball	EN 438-2:2016 (Clause-20)	Spring Force	N	≥ 25 (HGS) / ≥ 15 (VGS)
3.8	Resistance to cracking under stress	EN 438-2:2016 (Clause-23)	Appearance	Rating	≥ 4
3.9	Resistance to scratching	EN 438-2:2016 (Clause-25)	Appearance - Smooth Finishes	Rating	≥ 2 (HGS) / ≥ 1 (VGS)
			Appearance - Textured Finishes	Rating	≥ 3 (HGS) / ≥ 2 (VGS)
3.10	Resistance to staining	EN 438-2:2016 (Clause-26)	Appearance - Group 1 & 2	Rating	≥ 5
			Appearance - Group 3	Rating	≥ 4
3.11	Light fastness (Xenon arc)	EN 438-2:2016 (Clause-27)	Contrast	Grey scale rating	4 to 5
3.12	Density	EN ISO 1183-1	Density	gm/cm ³	≥ 1,35

Certifications



- Our Products are free from manufacturing defects and perfectly fit for use under normal conditions. In case of any claims, the liability of the company is however limited to the cost of the product only.
- ORDERS FOR CUSTOM - MADE SHEETS WILL BE ACCEPTED FOR BULK QUANTITY
- AVAILABLE SIZES: 8 FT. X 4 FT.
- Kindly check the actual laminate before finalizing, as printing colour may differ due to printing limitations

**Condition Apply | Not for Sale



S - 101

"7x3.25"/"8x4"

European
Standard
EN 438



S - 102

"7x3.25"/"8x4"

Digital Door



D - 203

"7x3.25"/"8x4"



European
Standard
EN 438





D - 205

"7x3.25" / "8x4"



D - 204

"7x3.25" / "8x4"

European
Standard
EN 438



European
Standard
EN 438

D - 206

"7x3.25" / "8x4"



C - 501

"7x3.25/8x4"



European
Standard
EN 438



C - 502

"7x3.25/8x4"





European
Standard
EN 438

C - 504

"7x3.25/8x4"



C - 505

"7x3.25/8x4"



European
Standard
EN 438



C - 506

"7x3.25"/"8x4"





C - 507

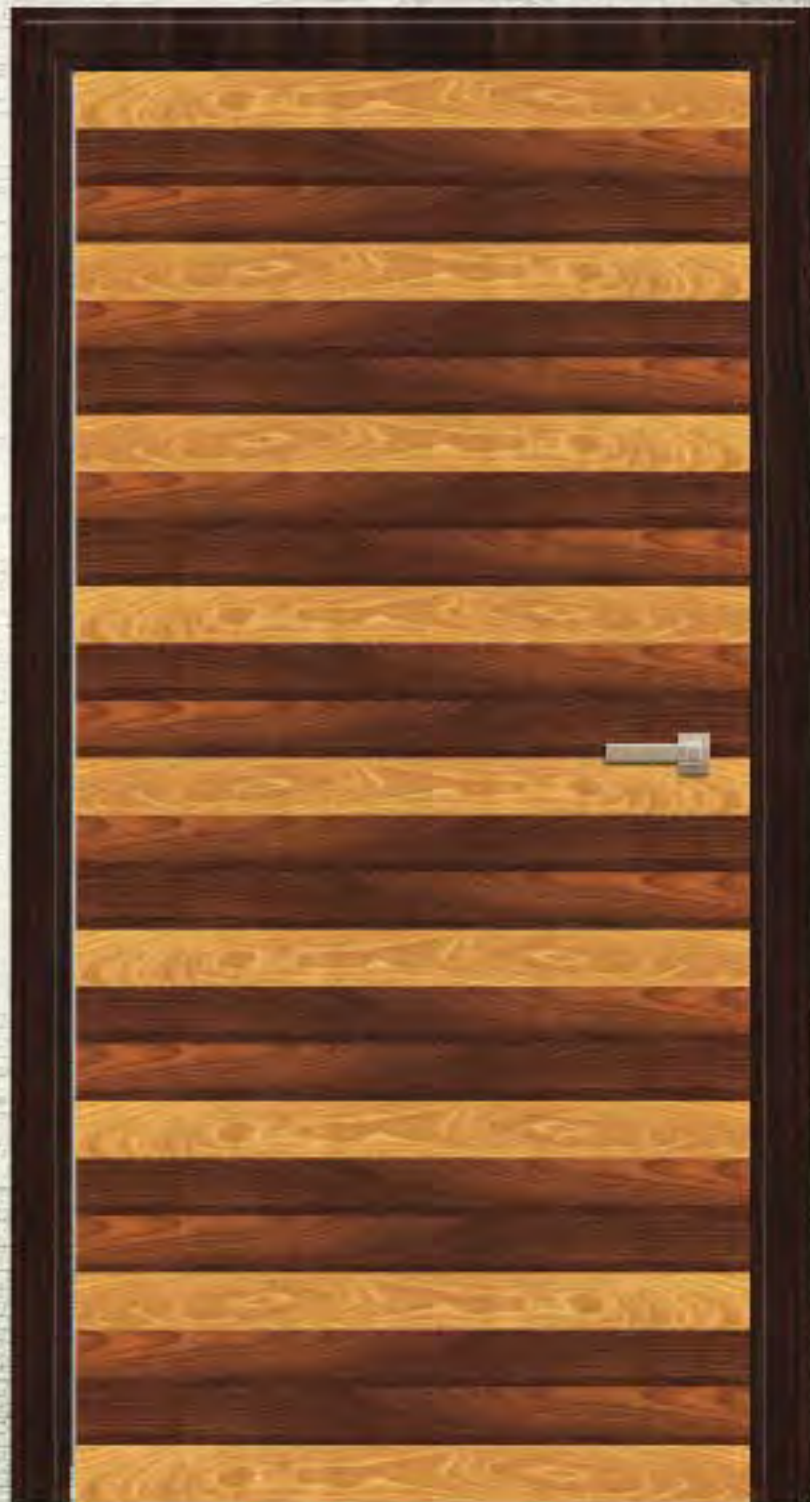
"7x3.25"/"8x4"

European
Standard
EN 438



C - 508

"7x3.25"/"8x4"



C - 509

"7x3.25"/"8x4"



C - 510

"7x3.25/8x4"

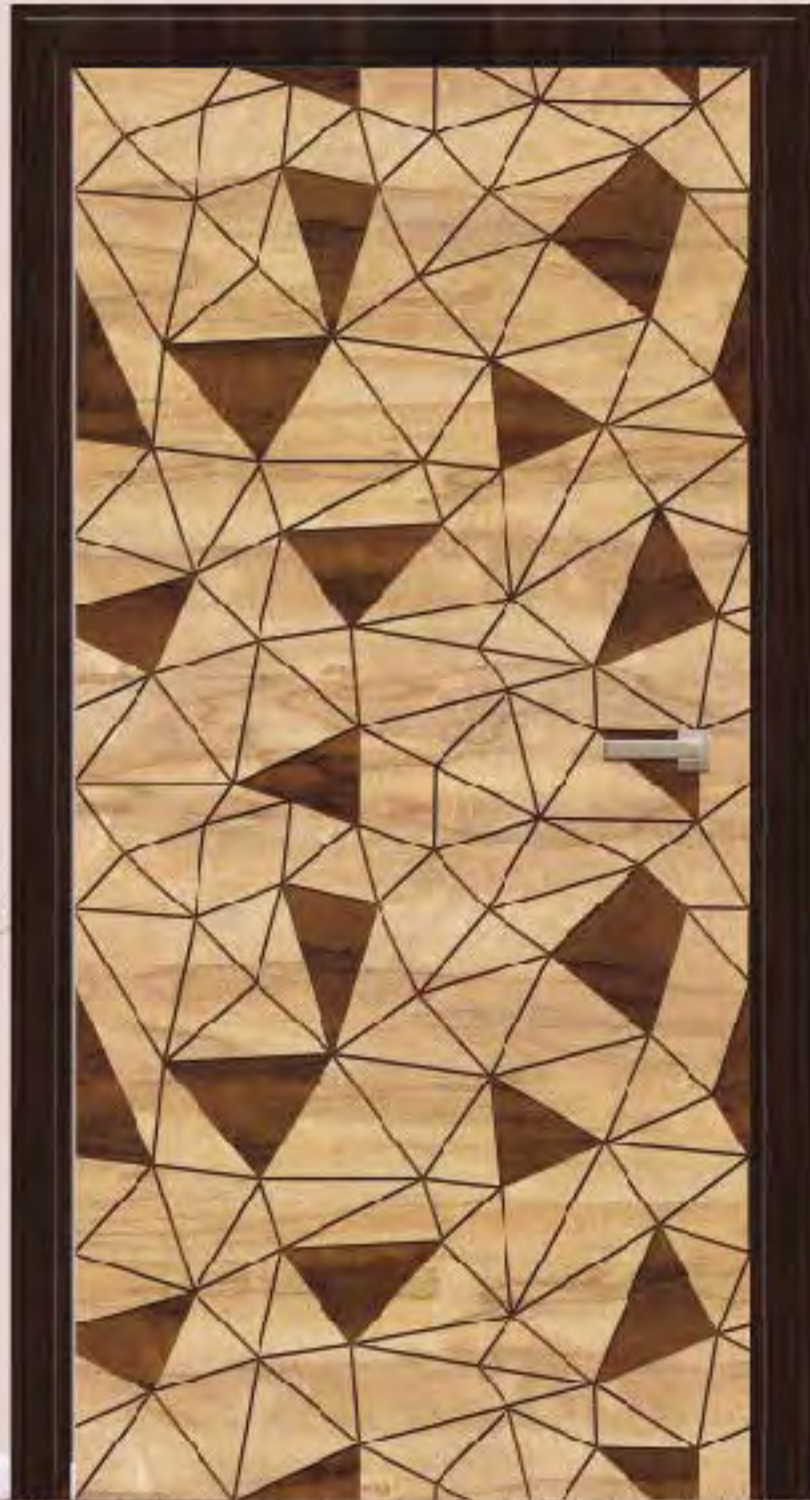
European
Standard
EN 438



European
Standard
EN 438

"7x3.25" / "8x4"

Digital Door



"7x3.25"/"8x4"

European
Standard
EN 438



Digital Door



D - 207

"7x3.25" / "8x4"

European
Standard
EN 438



"7x3.25" / "8x4"

Digital Door



*7x3.25"/#8x4"

European
Standard
EN 438



"7x3.25"/"8x4"

European
Standard
EN 438



"7x3.25"/"8x4"





"7x3.25"/"8x4"



European
Standard
EN 438



"7x3.25"/"8x4"





European
Standard
EN 438

"7x3.25"/"8x4"

Digital Door



E - 401

47x3.25" / 118x4"

European
Standard
EN 438



E - 403

"7x3.25" / "8x4"



E - 402

"7x3.25" / "8x4"

European
Standard
EN 438



E - 405

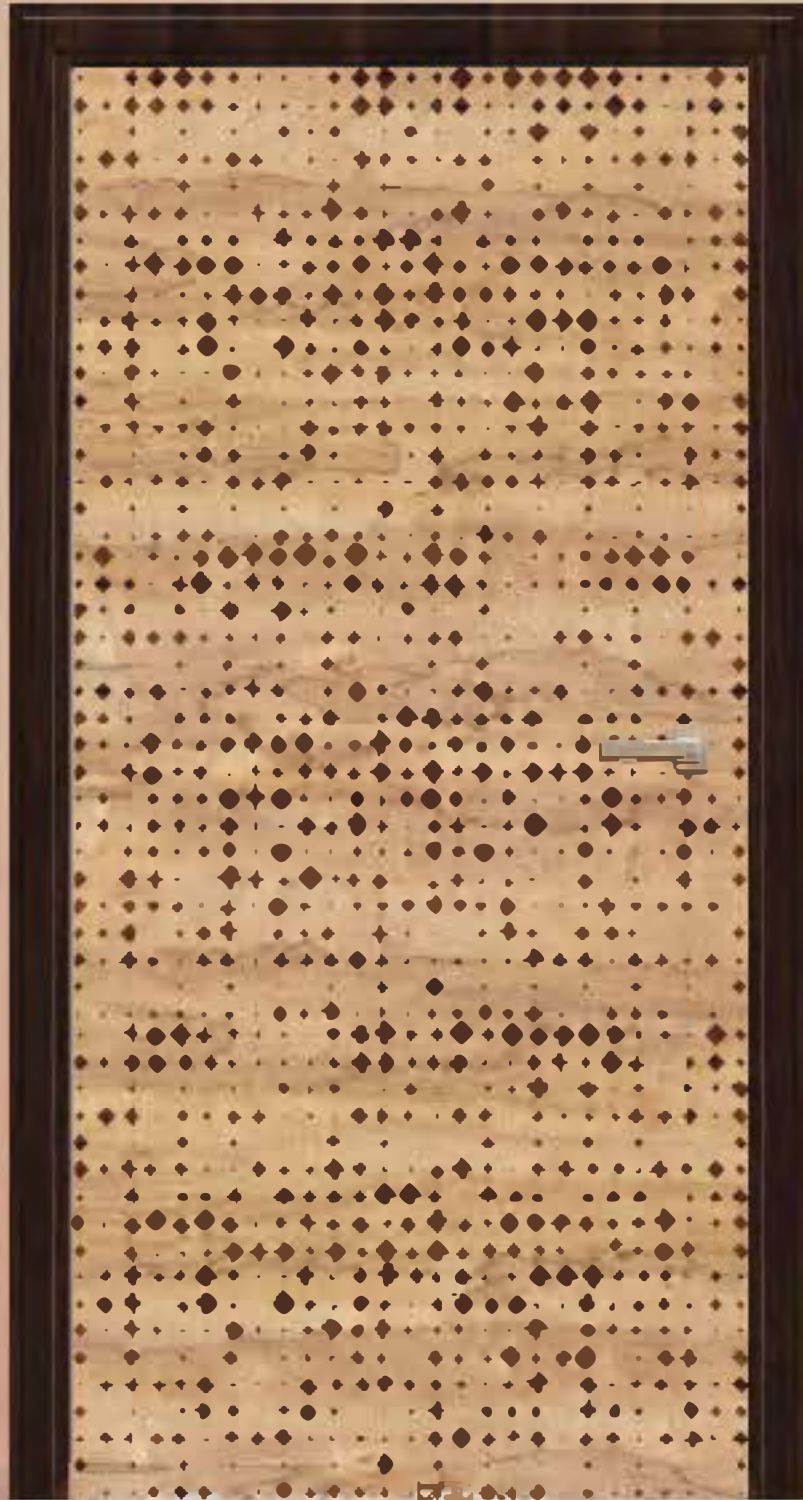
"7x3.25"/"8x4"

European
Standard
EN 438



E - 404

"7x3.25"/"8x4"



E - 407

"7x3.25"/"8x4"



E - 406

"7x3.25"/"8x4"

European
Standard
EN 438

Digital Door

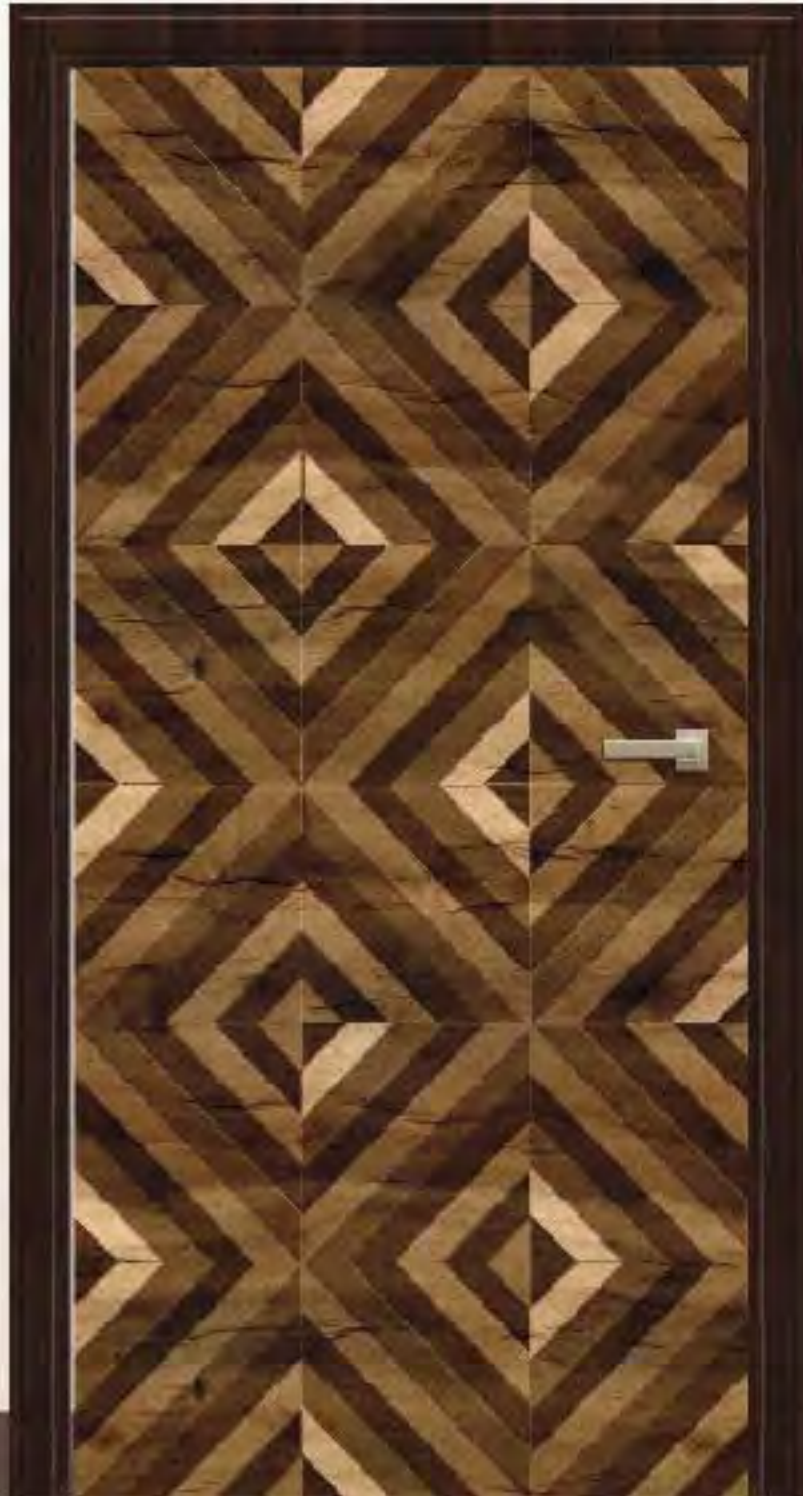


E - 409

"7x3.25"/"8x4"

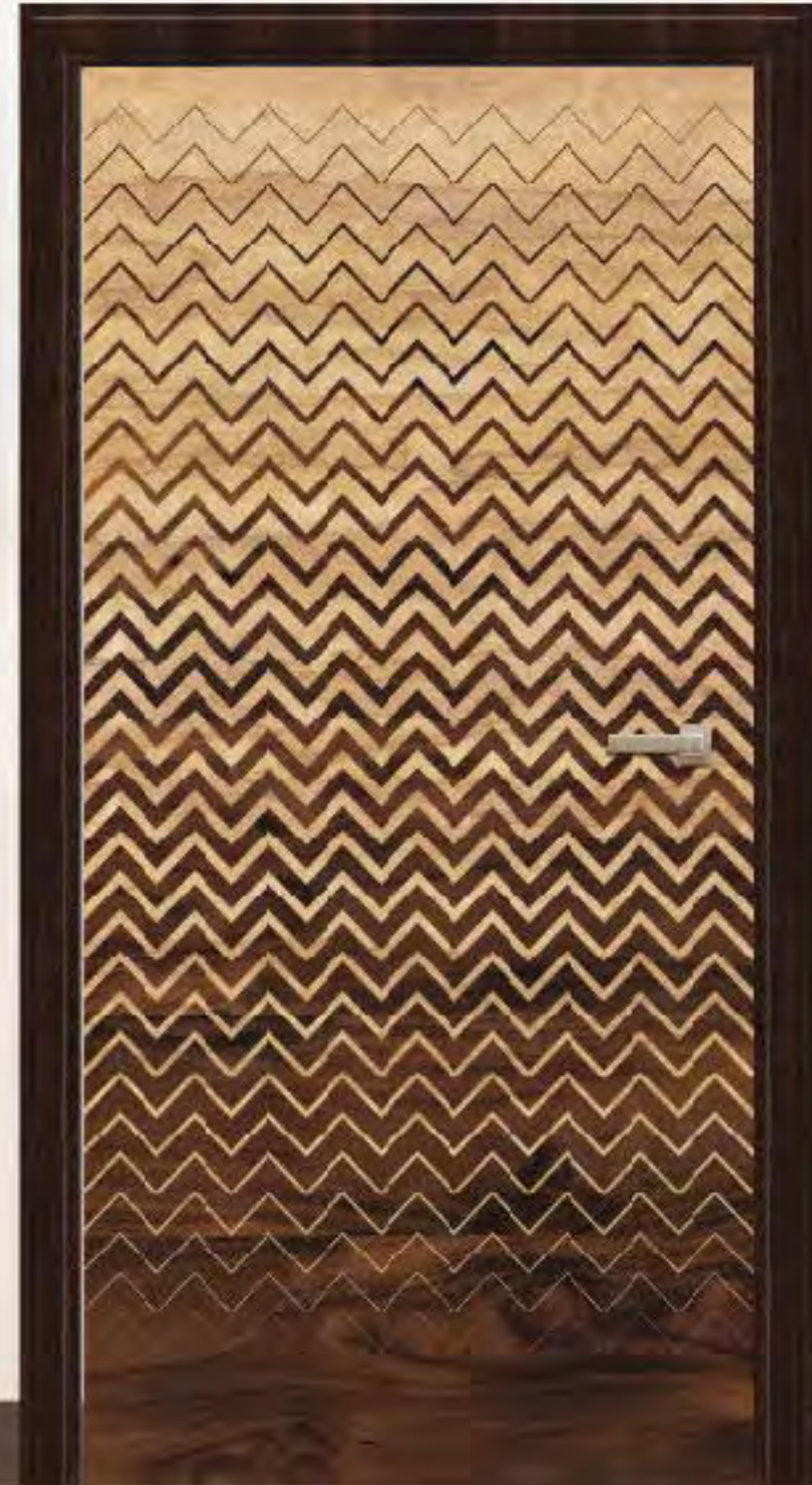
European
Standard
EN 438





E - 411

"7x3.25"/"8x4"



E - 408

"7x3.25"/"8x4"

European
Standard
EN 438



E - 418

"7x3.25"/"8x4"



E - 412

"7x3.25"/"8x4"

European
Standard
EN 438



E - 420

"7x3.25"/"8x4"



E - 414

"7x3.25"/"8x4"

European
Standard
EN 438



Digital Door



E - 416

"7x3.25"/"8x4"

European
Standard
EN 438





E - 422

"7x3.25"/"8x4"



European
Standard
EN 438



E - 415

"7x3.25"/"8x4"



P - 302

"7x3.25"/"8x4"

European
Standard
EN 438



E - 417

"7x3.25"/"8x4"





European
Standard
EN 438

B - 423

7x8.25"/8x4"



E - 419

"7x3.25"/"8x4"



E - 421

"7x3.25"/"8x4"

European
Standard
EN 438



E - 402

"7x3.25"/"8x4"



European Standard
EN 438



C - 503

"7x3.25/8x4"



INDEX
ANTIBACTERIAL
ANTIBACTERIAL



HD-01



HD-02



HD-03



HD-04



HD-05



HD-06



HD-07



HD-08



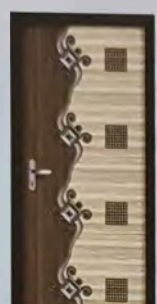
1085



1089



1087



1081



1082



1088



1086



1052



1054



1056



1057



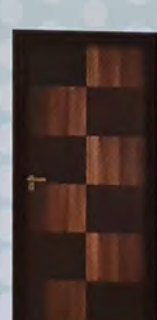
1058



1059



1063



1064



1066



1070



1067



1071



1073



1074



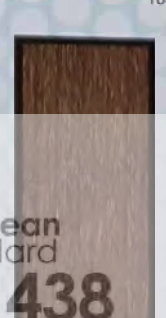
1076



1077



1080



Wenge | 1847



White Wenge | 1348



Douglas Pine | 1377



1440



1865

European Standard
EN 438

The background of the entire image is a dark, rich brown wood grain. The grain runs vertically, with various patterns of knots and swirls. The lighting is slightly darker towards the edges, creating a sense of depth and texture.

Lavish

v e n e e r

Artistic Bisque



Turkish Elm

Nature is almost inexhaustible inspiration for pattern, much of it beautiful and more the everything else it is purposeful.

DG NO: 1812

bring style
to
your interior

WHITE OAK

Columbian sepia

Raw still smooth, is what
interior all about.
Give your interior the feel
of nature.

DG NO: 1801

mystic v e n e e r



Cezarus Wood

Denoting the style of furniture form the botton of the nature,natural veneer.

DG NO: 1808

Trocardo wood



Trocardo Wood

The dark look of the veneer gives the furniture the opportunity to shine in pastel glow.



DG NO: 1804



**FOR
INTELLIGENT
& INCREDIBLE
IMPRESSIONS**

Woodlander

The black regal shades
lend suave distinction to
total elements.

DG NO: 1811

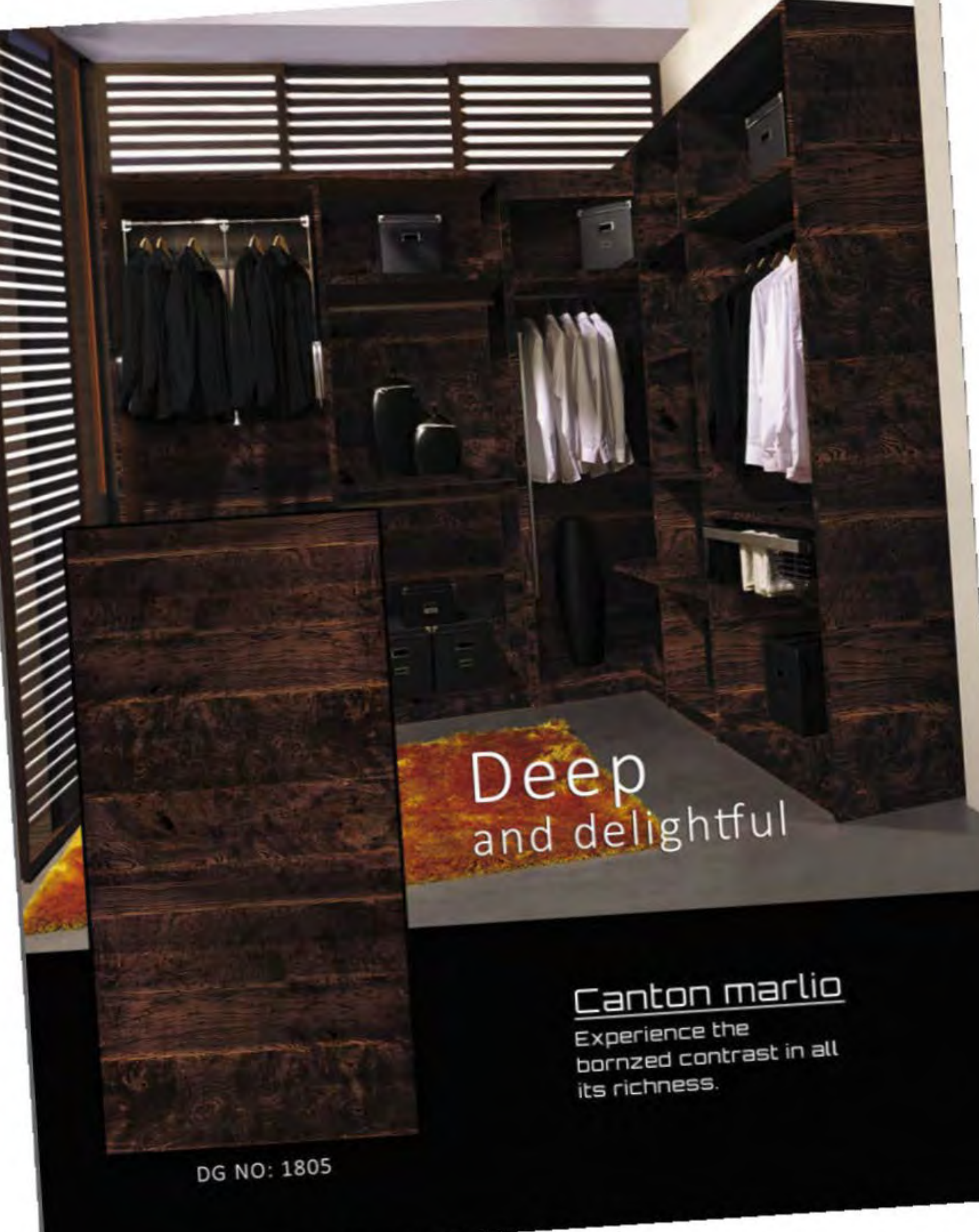
luxurious laminates



Oued Norfolk Wood

The dyed tones born of thick textures impress with a flourish.

DG NO: 1807



Deep
and delightful

Canton marlio

Experience the
bornzed contrast in all
its richness.

DG NO: 1805

wooden
splash



Ferret Wood

Elegance is not standing out, its being around even when absence.

DG NO: 1809

Columbian sepia
raw still smooth, is
what interior is
all about!



DG NO: 1810

Zambia Wood

Redefine your everyday
elegance with these
luxurious laminates.

Wonderful wood

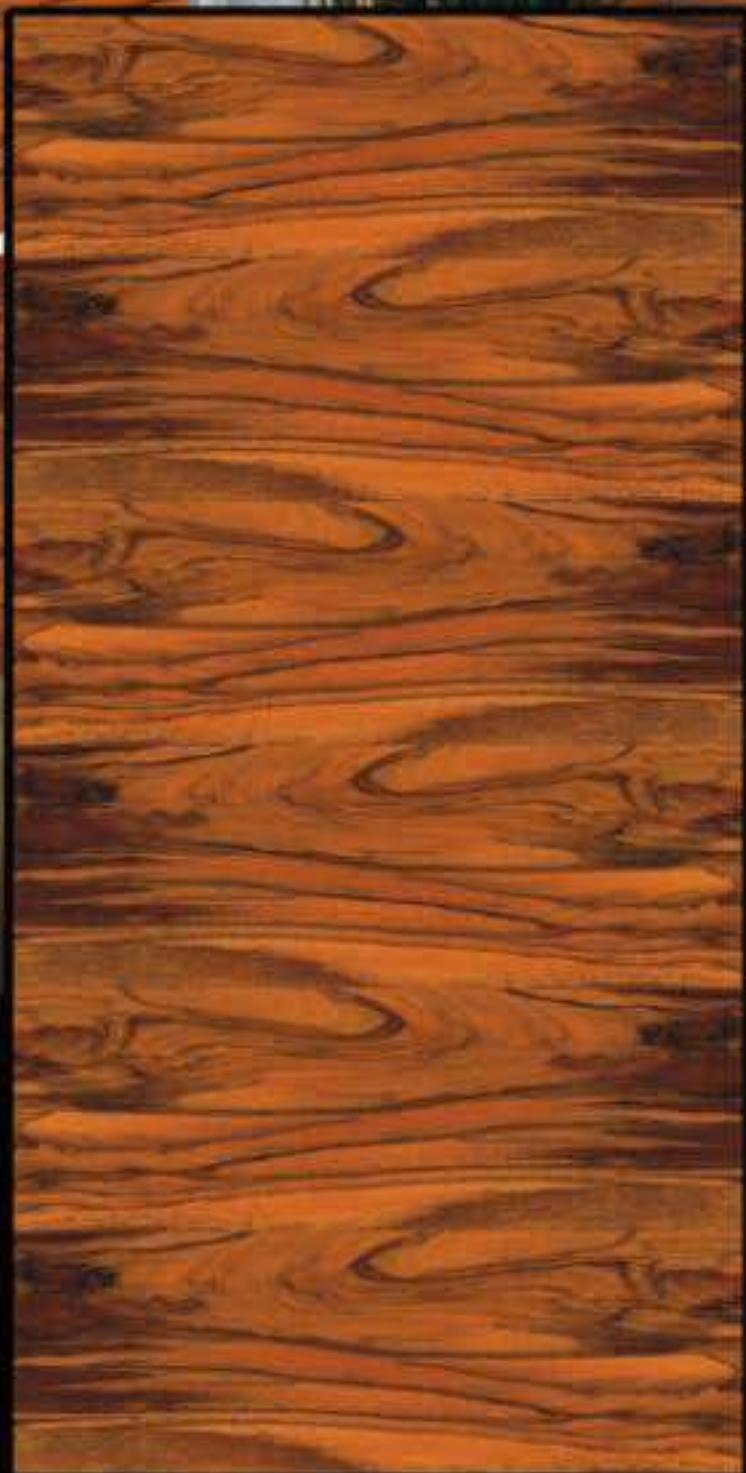


Pemba Wood

The pemba wood remain the most distinguished piece of the most fascinating interior.

DG NO: 1806

glimmer
f railways



DG NO: 1802

African Woodburst

Because you cannot
outshine nature,
Veneered laminate.



Goncalo Alves

Goncalo alves had the charm of natural veneer with deep grains and classic figure.

DG NO: 1813

exotic wood



DG NO: 1814



Scandic Wood

Color is like music,
it has an inherent ability
to create mood.

agrarian
and
organic feel



Merlin Veneer

Merlin veneer never fail
to elevate a striking surface
to a robust one.

DG NO: 1803



DG NO: 1806



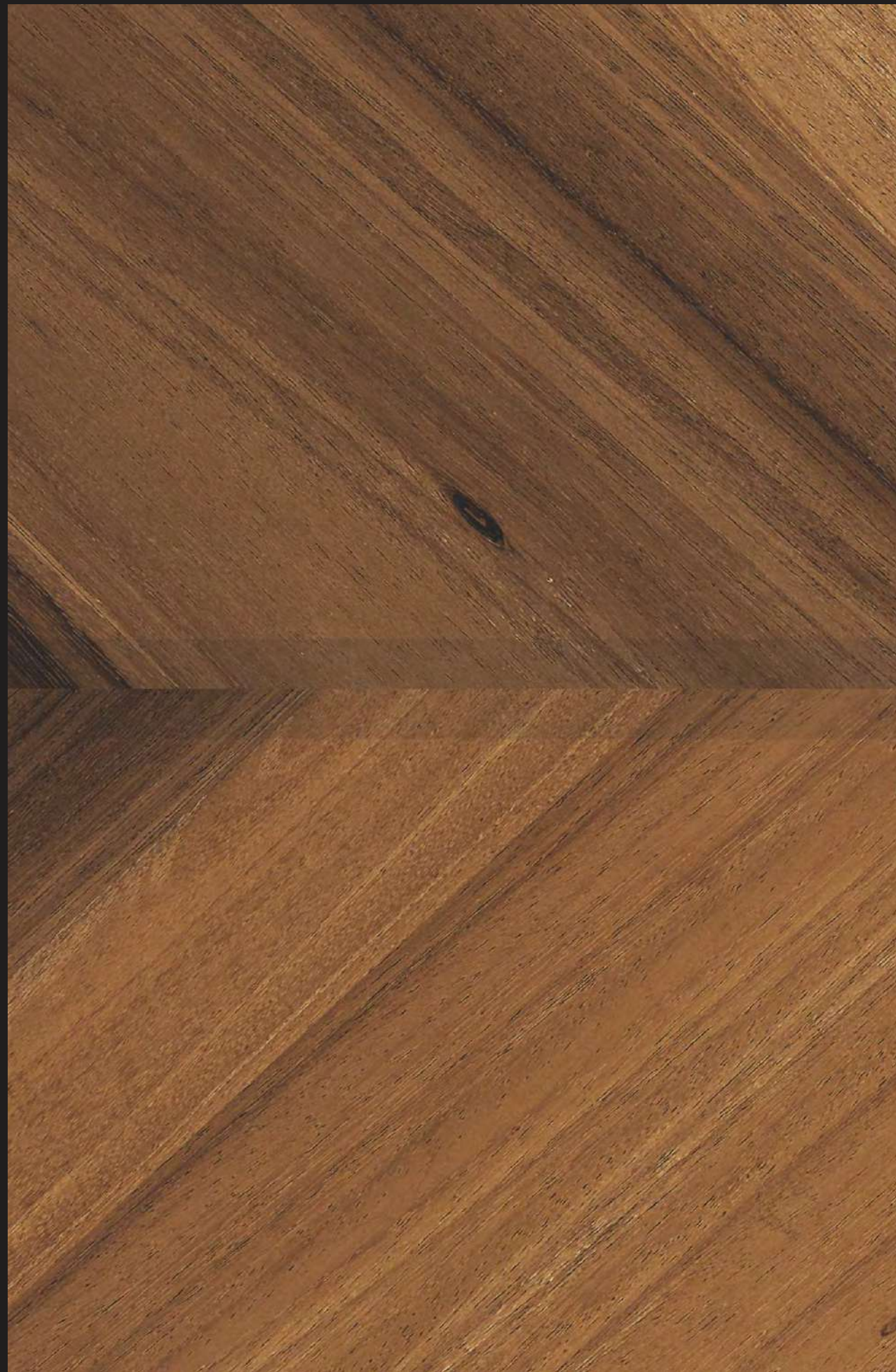
Pemba Wood

The pemba wood remain the most distinguished piece of the most fascinating interior.





DG NO: 1814



Scandic Wood

Color is like music,
it has a inherent ability
to create mood.





DG NO: 1807



Goncalo Alves

Goncalo alves had the charm of natural veneer with deep grains and classic figure.





DG NO: 1803



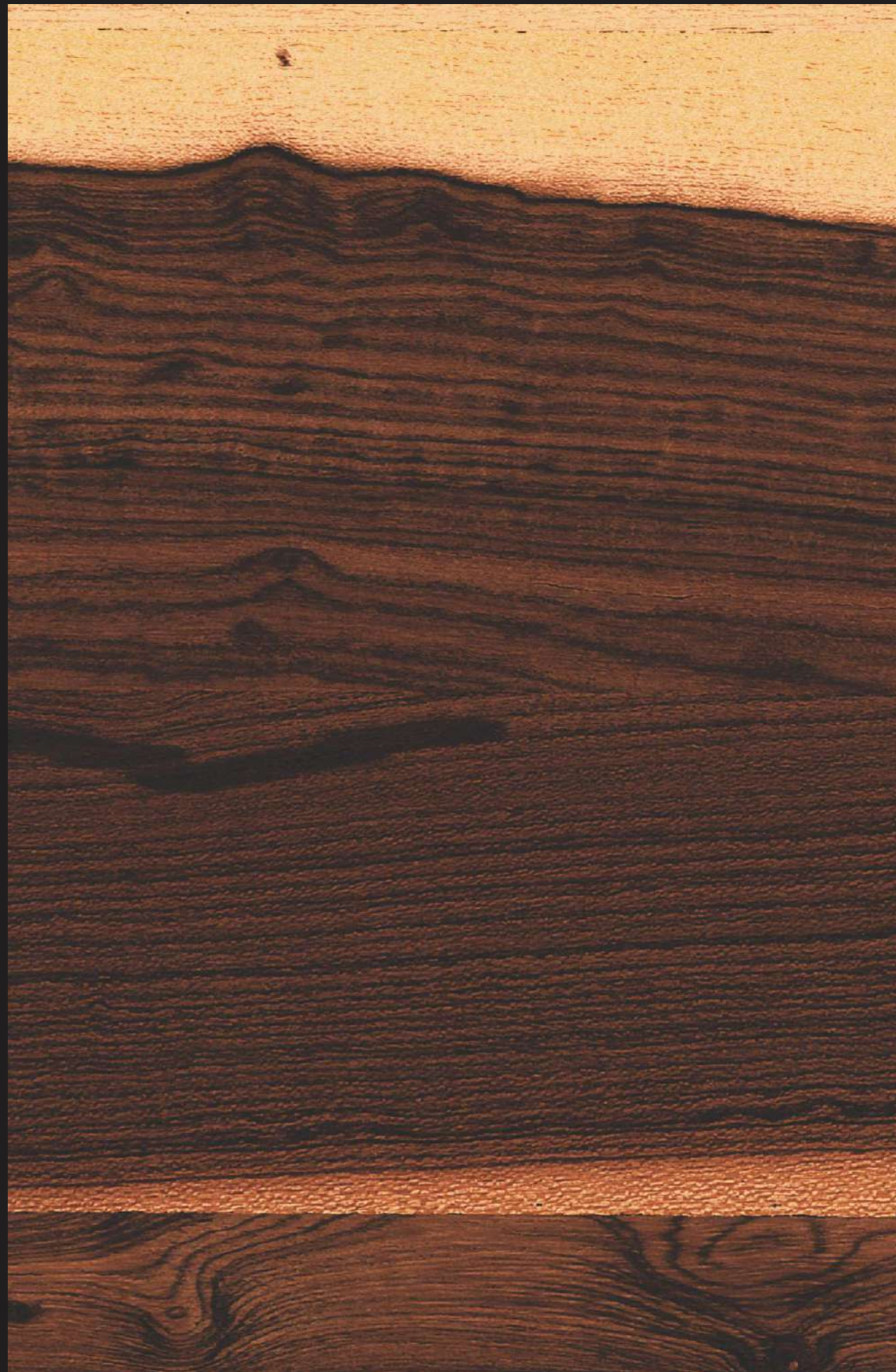
Merlin Veneer

Merlin veneer never fail to elevate a striking surface to a robust one.





DG NO: 1802



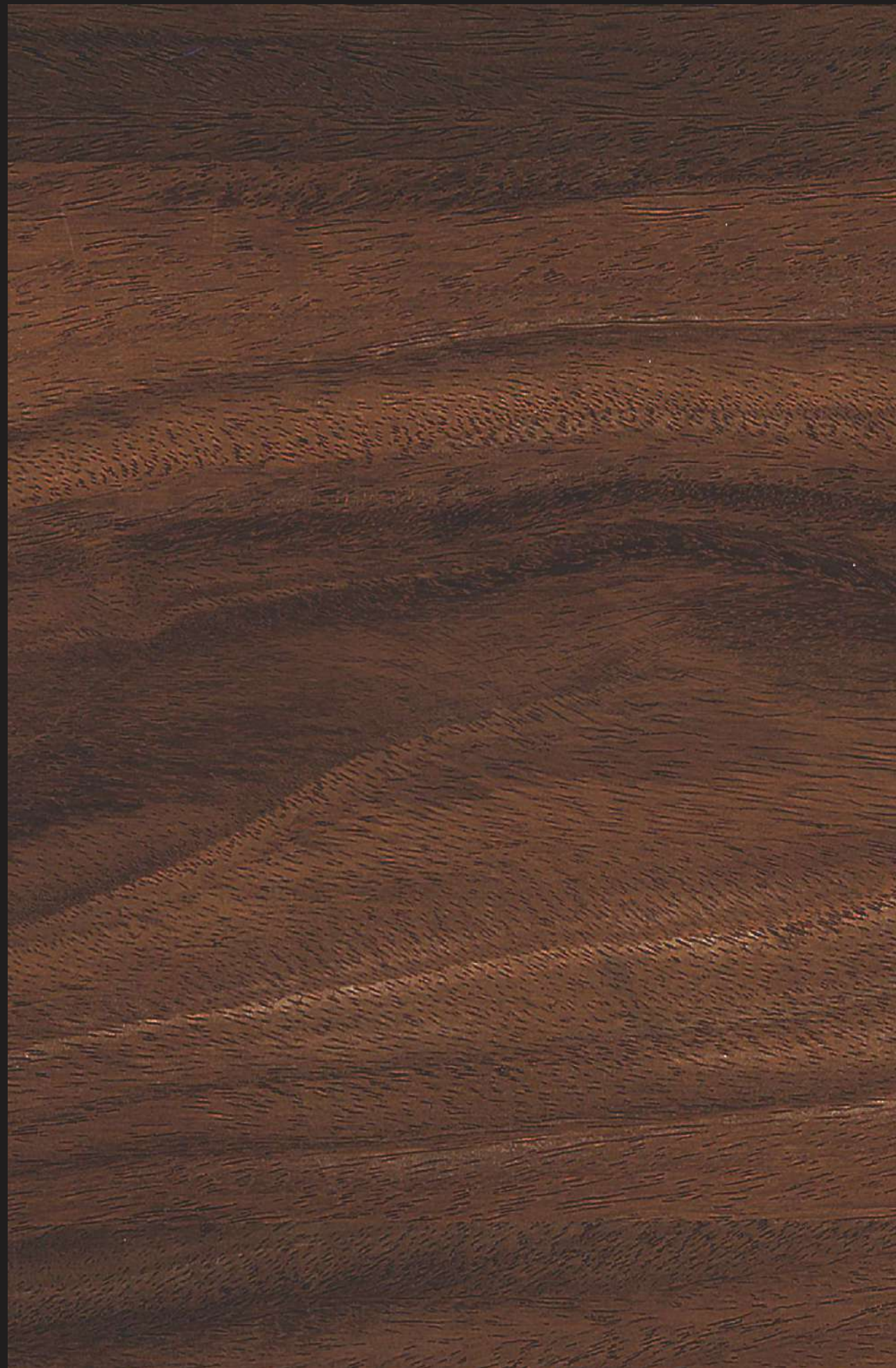
African Woodburst

Because you cannot
outshine nature,
Veneered laminate.



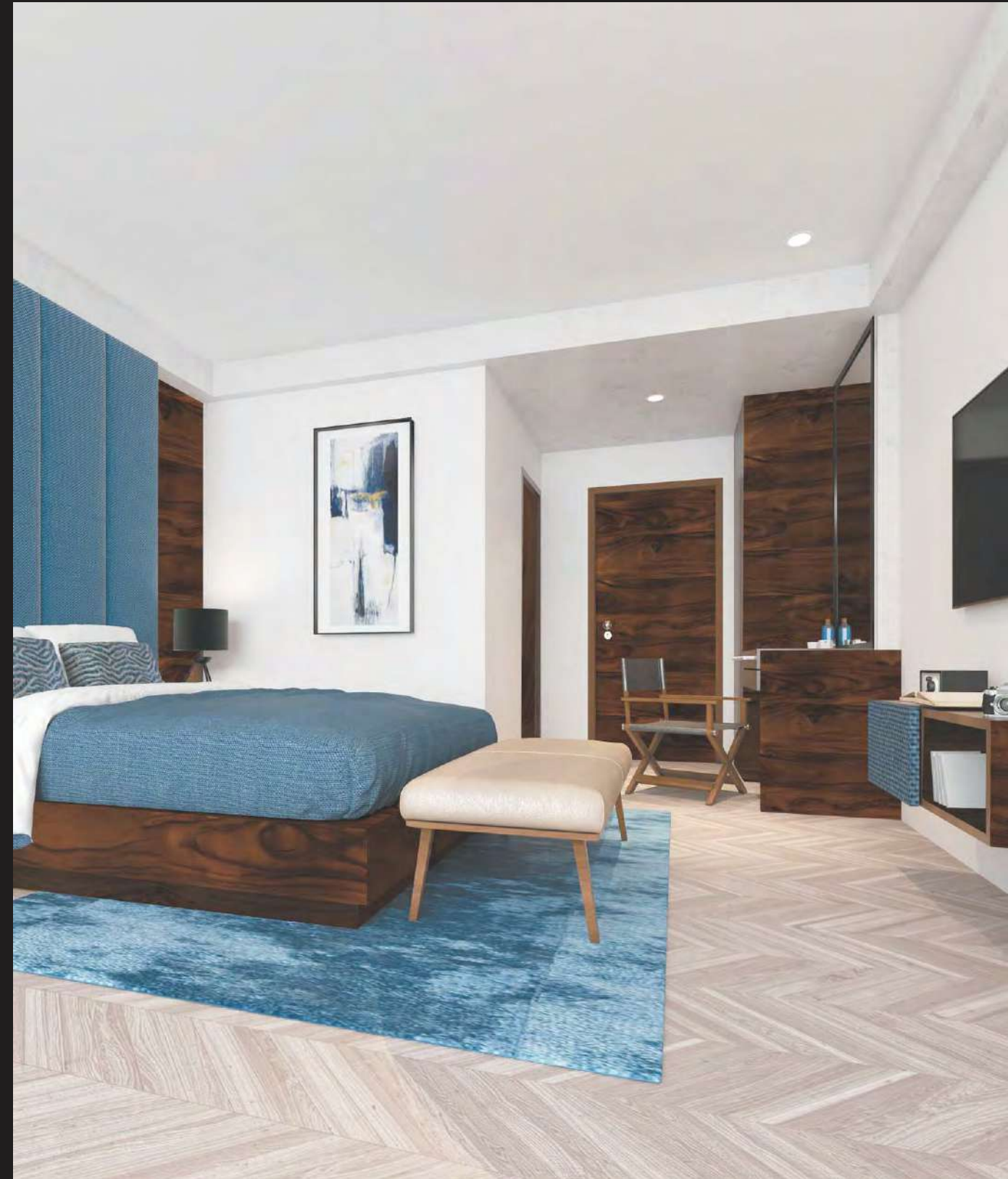


DG NO: 1804



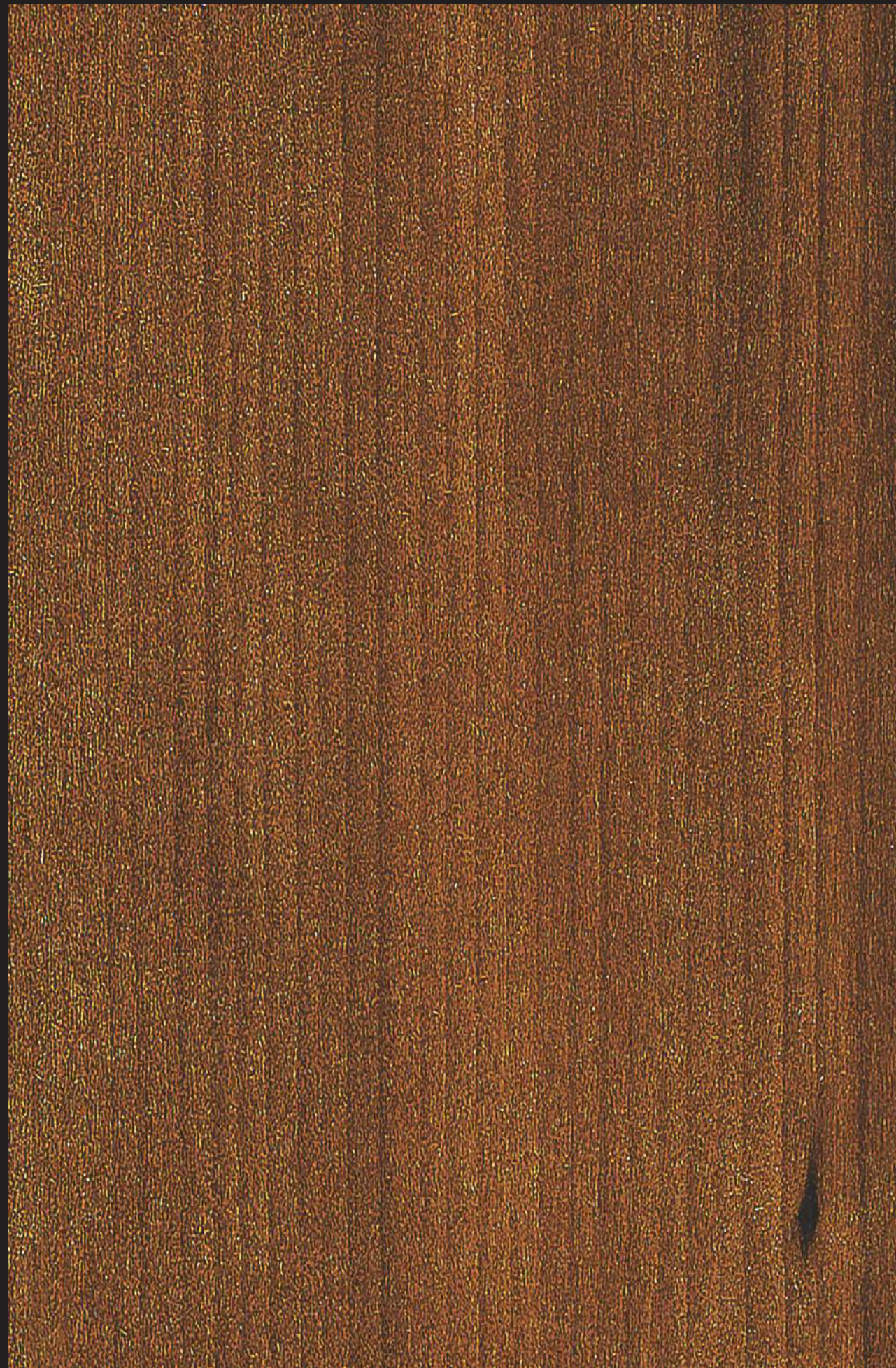
Trocardo Wood

The dark look of the veneer gives the furniture the opportunity to shine in pastel glow.





DG NO: 1810



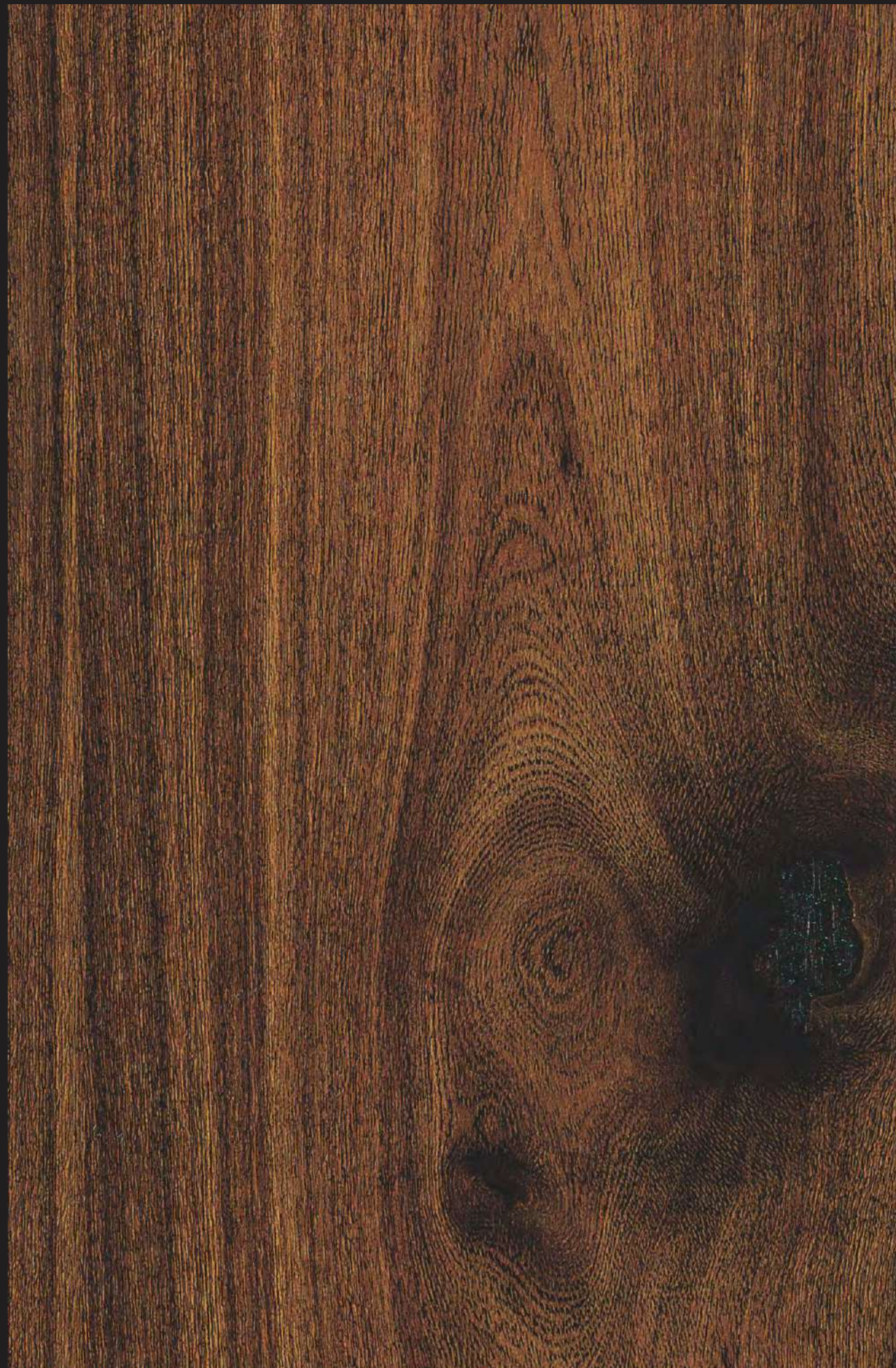
Zambia Wood

Redefine your everyday
elegance with these
luxurious laminates.





DG NO: 1801



Columbian sepia

Raw still smooth, is what interior all about.
Give your interior the feel of nature.





DG NO: 1812



Turkish Elm

Nature is almost inexhaustible inspiration for pattern, much of it beautiful and more the everything else it is purposeful.





DG NO: 1809



Ferret Wood

Elegance is not standing out, its being around even when absence.





DG NO: 1805



Canton marlio

Experience the
bornzed contrast in all
its richness.

